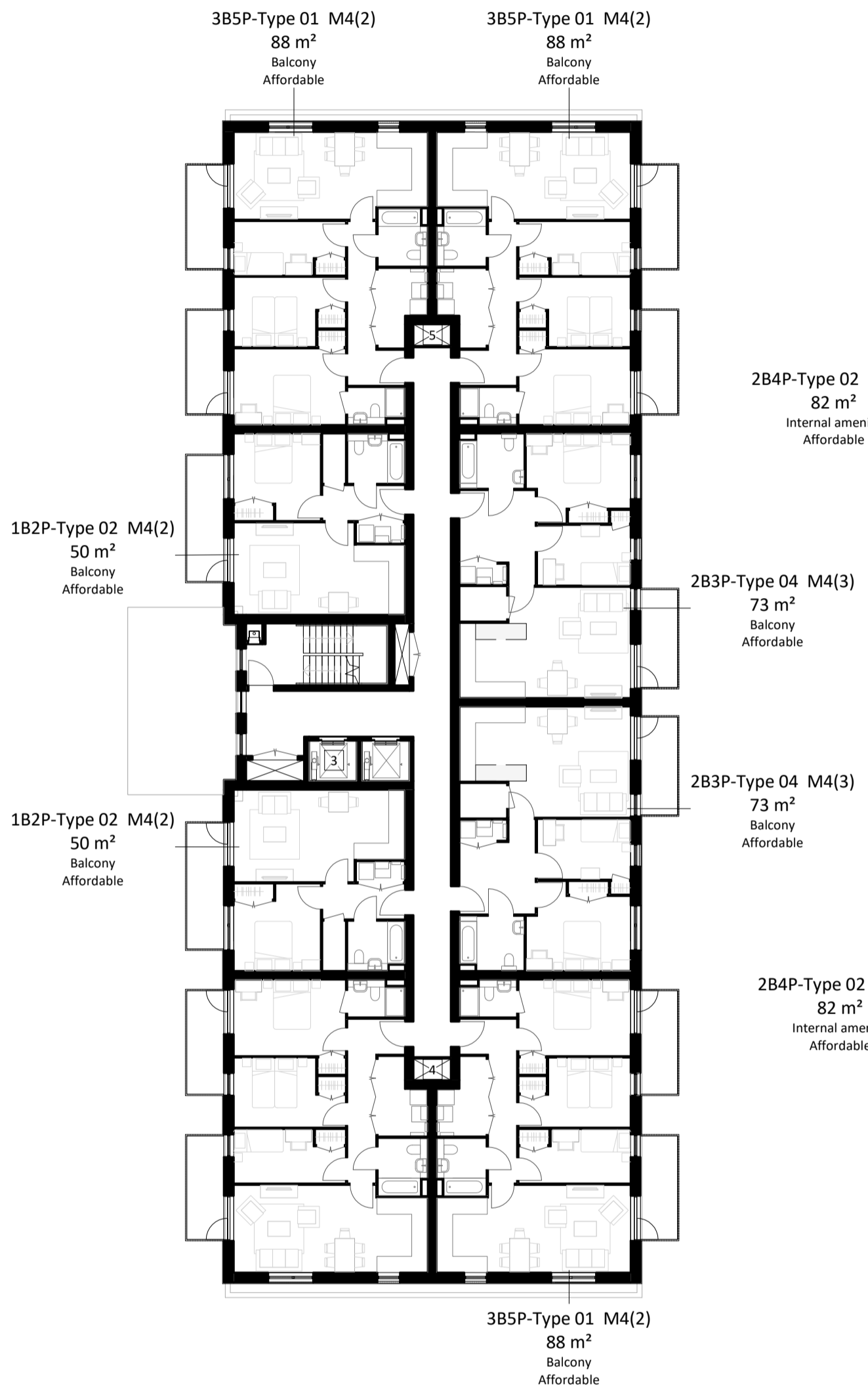


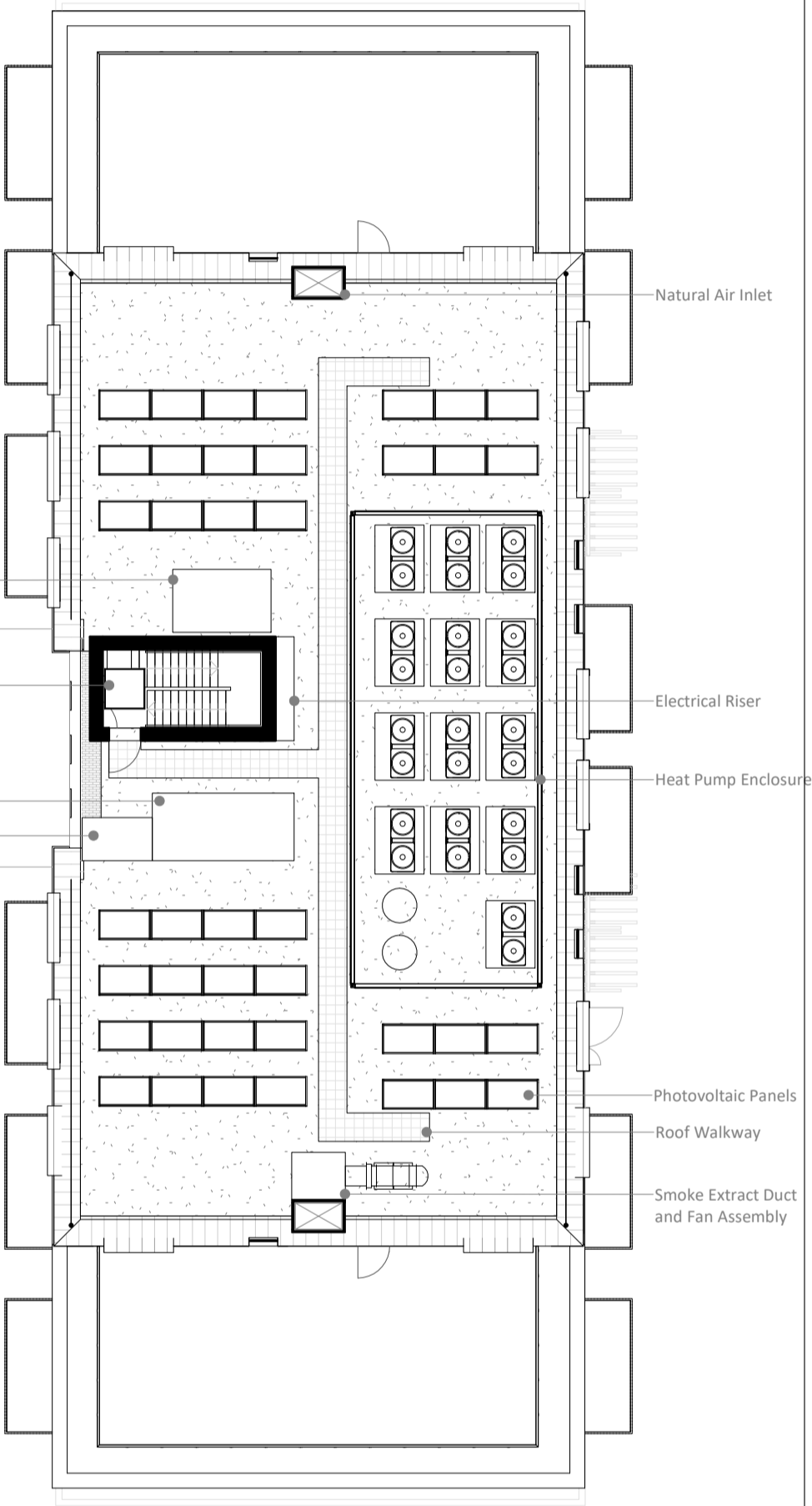
**1 Building 10 - Ground Floor Plan**  
1 : 200



**2 Building 10 First to Fifth Floor Plan**  
1 : 200

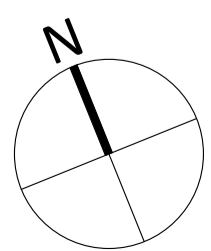


**3 Building 10 - Sixth Floor Plan**  
1 : 200



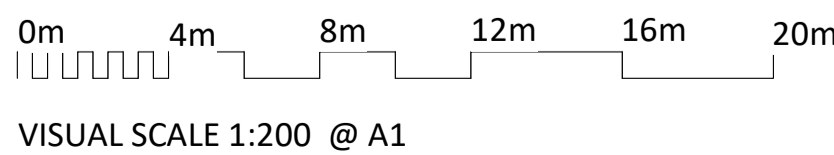
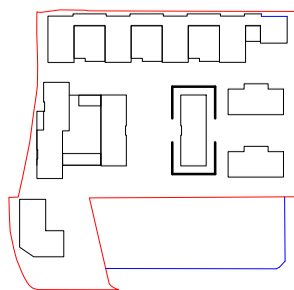
**4 Building 10 - Roof Plan**  
1 : 200

**NOTES**  
CONSULTANTS  
- Refer to highways consultant's drawings for details  
- Refer to landscape consultant's drawings for details  
- Landscaping layout is indicative only  
  
AREAS  
- Refer to area schedule



Rev	Notes	Date	By	Auth
P1	DRAFT Planning Issue	19-08-30	CS	FvB
P2	Issue for Planning	19-09-05	CS	FvB
P3	Planning amendment	19-09-24	CS	FvB
P4	Update for GLA Application	20-04-07	OT	JBC
P5	GLA Agreed Changes	20-07-23	CS	MG
P6	substitutions	20-07-24	CS	MG

**KEY PLAN**



VISUAL SCALE 1:200 @ A1

**LEGEND: FIRE SECURITY**

- 1 Sterile ventilated staircase lobby
- 2 AOV / Smoke shaft (min. 1.5m² section)
- 3 Firefighting lift
- 4 Mechanical smoke extraction duct (min. 0.6m² section)
- 5 Natural air inlet duct

**ColladoCollinsArchitects**

17-19 Foley Street  
London W1W 6DW  
T 020 7580 3490  
F 020 7580 2917  
info@colladocollins.com  
www.colladocollins.com

Date: 09/02/19  
Drawn By: CS  
Checked by: JBC  
Scale @ A1: As indicated  
Scale @ A3: 1 : 400  
CAD File No:

Inland Homes  
Hillingdon  
Building 10 - Floor Plans

PLANNING  
19011

P1(10)-100

P6  
Revision